

INTRODUCTION

INITIATION DATE: 01-Jul-2014

OBJECTIVE: A high risk portfolio aiming to achieve long-term capital appreciation by investing 30% in bond funds and 70% in equity funds

SUITABLE FOR: Investors seeking to accumulate and grow their wealth over the long term with a more aggressive investment positioning

INFORMATION

Initial Investment(RM) 10,000.00

Value as of 31 October 2017 (RM) 12,696.45

Total Profit/Loss (RM) 2,696.45

Total return 27.0%

Annualised return* 8.4%

Portfolio Volatility* 5.6%

Source: IFAST Compilations as of 31 October 2017. * 2-year data

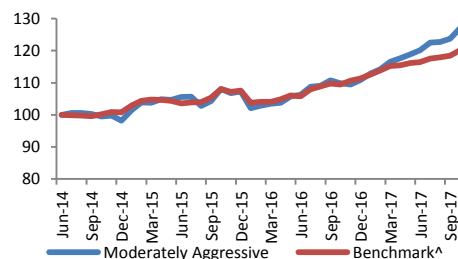
MARKET COMMENTARY

UPDATE

- Global equity markets posted positive result over the month. Developed Market equities represented by MSCI AC World Islamic Index gained by 1.62%
- Asian equities represented by MSCI AC Asia Islamic ex Japan Index gained 5.47% while Emerging Market equities represented by MSCI Emerging Markets Index gained 3.72%
- Malaysia's benchmark, represented by FBM EMAS Shariah Index, gained by 2.23%.
- Overall, bond markets had mixed returns over the month. Global bonds declined by -0.03%. Malaysia bonds gained by 0.33%.

[All returns are in MYR term]

INDEXED PERFORMANCE



Source: IFAST Compilations as of 31 October 2017

HOLDINGS

Fund Name	Weighting	Amount(RM)	NAV at 30 Sep	NAV at 31 Oct
Pacific Dana Murni	12.5%	1,250	0.5385	0.5399
AMB Dana Arif Class A-MYR	12.5%	1,250	0.5945	0.5958
Aberdeen Islamic World Equity Fund-Class A	23.5%	2,350	1.5858	1.6006
CIMB Islamic Asia Pacific Equity Fund-MYR	17.0%	1,700	0.8576	0.9031
Eastspring Investment Dana Al Ilham	17.0%	1,700	0.6808	0.7032
Pheim Asia Ex-Japan Islamic Fund	10.0%	1,000	1.2498	1.3241
Eastspring Investment Dinasti Equity Fund	7.5%	750	1.8742	1.9389

Source: Bloomberg, IFAST Compilations as of 31 October 2017, returns are in MYR term with dividend reinvested

INDIVIDUAL PERFORMANCE (%)

	1M	3M	6M	YTD	1YR	3Y *	STDEV
Moderately Aggressive	0.3	0.9	1.8	3.6	3.0	3.6	1.2
Benchmark	0.2	0.9	2.0	3.6	3.1	4.3	1.3
Global Equities	0.9	2.1	5.1	8.5	15.7	9.0	9.0
Asian Equities	5.3	6.8	19.3	28.8	28.0	15.2	11.8
Malaysia Equities	3.3	2.7	1.7	5.9	3.8	2.3	7.9
Emerging Markets Equities	6.0	7.7	10.7	25.2	22.7	9.1	10.9
Bonds	3.5	6.2	20.1	35.8	35.6	22.1	12.6

* annualised returns

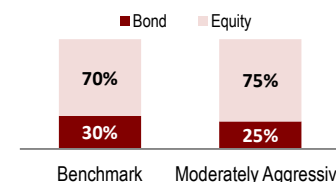
PERFORMANCE TABLE

	YTD	1M	3M	6M	1Y	2Y*
Portfolio	14.6%	2.6%	3.6%	7.9%	15.5%	8.4%
Benchmark [^]	7.8%	1.4%	2.2%	4.0%	9.7%	5.4%

Benchmark[^]: 24% Thompson Reuters BPAM All Bond Index, 6% JPM Global Aggregate Bond Index, 22% MSCI AC World Index, 11% MSCI Asia ex Japan Index, 17% FTSE Bursa Malaysia KLCI Index, 6% MSCI Emerging Markets Index, 14% MSCI Asia ex Japan Small Cap Index

Source: Bloomberg, IFAST Compilations as of 31 October 2017, returns are in MYR term with dividend reinvested

INTER ASSET ALLOCATION



Source: IFAST Compilations as of 31 October 2017

COMMENTARY

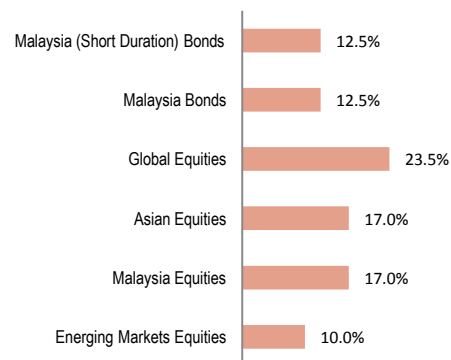
PORTFOLIO

- Equities remain attractive relative to bonds, maintain "overweight" position in equities
- Pheim Asia Ex-Japan Islamic Fund was the best performing fund in the portfolio, surging 6.0%
- AMB Dana Arif Class A-MYR was the worst performing fund in the portfolio, with a return of 0.2%

PORTFOLIO ADJUSTMENTS

ACTION TAKEN:

INTRA ASSET ALLOCATION



**0.0% Asian Bonds and 0.0% Emerging Markets Bonds
Source: IFAST Compilations as of 31 October 2017

This article is not to be construed as an offer or solicitation for the subscription, purchase or sale of any fund. No investment decision should be taken without first viewing a fund's prospectus and if necessary, consulting with financial or other professional advisers. Any advice herein is made on a general basis and does not take into account the specific investment objectives of the specific person or group of persons. Amongst others, investors should consider the fees and charges involved. The relevant prospectuses have been registered with the Securities Commission. Past performance and any forecast is not necessarily indicative of the future or likely performance of the fund. The value of units and the income from them may fall as well as rise. Where a unit split/distribution is declared, investors are advised that following the issue of additional units/distribution, the NAV per unit will be reduced from pre-unit split NAV/cum-distribution NAV to post-unit split NAV/ex-distribution NAV. Where a unit split is declared, investors should be highlighted of the fact that the value of their investment will remain unchanged after the distribution of the additional units. All applications for unit trusts must be made on the application form accompanying the prospectus. The prospectuses can be obtained from FundsUPERMART.com. Opinions expressed herein are subject to change without notice. Please read our disclaimer in the website.